

Hisense

Hisense

USER'S OPERATION MANUAL

Hisense

X08060026A

Before operating this unit, please read this manual thoroughly,
and retain for future reference

INSTRUCTIONS FOR USE

BEFORE USING THE WASHING MACHINE

**PRECAUTIONS AND GENERAL
RECOMMENDATIONS**

DESCRIPTION OF THE WASHING MACHINE

OPENING / CLOSING DOOR

CHILD SAFETY (IF AVAILABLE)

BEFORE THE FIRST WASH CYCLE

PREPARATION OF THE WASHING

DETERGENTS AND ADDITIVES

DRAINING RESIDUAL WATER

CARE AND MAINTENANCE

TROUBLESHOOTING GUIDE

AFTER-SALES SERVICE

TRANSPORT / HANDLING

ELECTRICAL CONNECTION

NOTE

The manufacturer reserves the right for any modifications on the product which might be deemed necessary or useful without informing about it in this IFU.

Thank you for choosing a Hisense washing machine.

Before operating your new washing machine, please read this instruction carefully, and keep it for future reference. If you have lost it accidentally, ask customer service for e-copy or hard copy.

Please make sure the socket is grounded securely, the water source connection is reliable. The manufacturer declines all liability and warranty for damage to property or injury to persons or animals due to non-compliance with the directions given in this instruction.

If the supply cord is damaged, it must be replaced by the manufacturer, its service agent or similarly qualified persons in order to avoid a hazard.

The new hose-sets supplied with the appliance are to be used and that old hose-sets should not be reused.

This appliance can be used by children aged from 8 years and above and persons with reduced physical. Sensory or mental capabilities or lack of experience and knowledge if they have been given supervision or instruction concerning use of the appliance in a safe way and understand the hazards involved.

Children shall not play with the appliance. Cleaning and user maintenance shall not be made by children without supervision.

Children of less than 3 years should be kept away unless continuously supervised.

The maximum permissible inlet water pressure, 1 MPa, for appliances intended to be connected to the water mains

The minimum permissible inlet water pressure, 0.1 MPa, if this is necessary for the correct operation of the appliance

For washing machines with ventilation openings in the base, that a carpet must not obstruct the openings.

BEFORE USING THE WASHING MACHINE

1. Removing the packaging and inspection

- After unpacking, ensure that the washing machine is undamaged. If in doubt, do not use the washing machine. Contact After-Sales Service or your local retailer.
- Check that the accessories and supplied parts are all present.
- Keep the packaging materials (plastic bags, polystyrene parts, etc.) out of reach of children, as they are potentially dangerous.

2. Remove the transport bolts

- The washing machine is fitted with transport bolts to avoid any possible damage to the interior during transport. Before using the machine, it is imperative that the transport bolts are removed.
- After their removal, cover the openings with the 4 enclosed plastic caps.

3. Install the washing machine

- Move the appliance without lifting it by the worktop.
- Install the appliance on a solid and level floor surface, preferably in a corner of the room.
- Ensure that all four feet are stable and resting on the floor and then check that the washing machine is perfectly level (use a spirit level).
- Ensure that the ventilation openings in the base of the washing machine (if available on your model) are not obstructed by a carpet or other material.

4. Water inlet

- Connect the water supply inlet hose in accordance with the regulations of your local water company.
- Water inlet - Depending on models:
 - Single inlet - Cold water only
 - Dual inlet - Hot and cold water
- Water tap: 3/4 threaded hose connector

5. Drain

- Connect the drain hose to the siphon or hook it over the edge of a sink by means of the “U” bend supplied.
- If the washing machine is connected to an integrated drainage system, ensure that the latter is equipped with a vent to avoid simultaneous loading and draining of water (siphoning effect).
- Fix the drain hose securely to prevent scalding during machine drainage.

6. Electrical connection

- Electrical connections must be carried out by a qualified technician in compliance with the manufacturer’s instructions and current standard safety regulations.
- Data regarding voltage, power consumption and protection requirements is given on the inside of the door.
- The appliance must be connected to the mains by means of a socket with an earth connection in accordance with current regulations. The washing machine must be earthed by law. The manufacturer declines all liability for damage to property or injury to persons or animals due to non-compliance with the directions given above.
- Do not use extension leads or multiple sockets. Make sure the capacity of the socket is powerful enough to drive the machine during heating.
- Before any maintenance on the washing machine disconnect it from the mains supply.
- After installation, access to the mains plug or to disconnection from the mains supply must be ensured at all times via a double-pole switch.
- Do not operate the washing machine if it has been damaged during transport. Inform After-Sales Service.
- Mains cable replacement is only to be carried out by After-Sales Service.
- The appliance must only be used in the household for the prescribed uses.

Minimum housing dimensions:


Width: 615 mm

Height: 855 mm

Depth: refer to programme chart


PRECAUTIONS AND GENERAL RECOMMENDATIONS

1. Packaging

- The packaging material is entirely recyclable, and marked with the recycling symbol . Adhere to current local regulations when disposing of packaging material.

2. Disposing of packaging and scrapping old washing machines

- The washing machine is built from reusable materials. It must be disposed of in compliance with current local waste disposal regulations.
- Before scrapping, remove all detergent residues, break the door hook, and cut off the power cable so that the washing machine is made unusable.
- This appliance is marked according to the European directive 2002/96/EC on Waste Electrical and Electronic Equipment (WEEE). By ensuring that this product is disposed of correctly, you will help prevent potential negative consequences for the environment and human health, which could otherwise be caused by inappropriate waste handling of this product.

The symbol  on the product, or on the documents accompanying the product, indicates that this appliance may not be treated as household waste. Instead it shall be handed over to the applicable collection point for the recycling of electrical and electronic equipment. Disposal must be carried out in accordance with local environmental regulations for waste disposal. For more detailed information about treatment, recovery and recycling of this product, please contact your local city office, your household waste disposal service or the shop where you purchased the product.

3. Location and surroundings

- The washing machine must only be installed in enclosed spaces. Installation in the bathroom or other places where air is humid is not recommended.
- Do not store flammable fluids near the appliance.

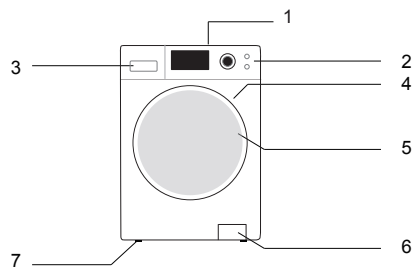
4. Safety

- Do not leave the appliance plugged in when not in use. Never plug or unplug the power from the mains supply, if your hands are wet.
- Turn off the tap.
- Before any cleaning and maintenance, switch off the machine or disconnect it from the mains.

- Clean the outside of the washing machine with a damp cloth. Do not use abrasive detergents.
- Never open the door forcibly or use it as a step.

DESCRIPTION OF THE WASHING MACHINE

- 1 Worktop
- 2 Control panel
- 3 Detergent dispenser
- 4 Door
- 5 Child safety device (if provided, inside the door)
- 6 Plinth covering pump access
- 7 Adjustable feet



Control panel layout and appearance will depend on the model.

OPENING/CLOSING DOOR

Only when the door opening light in green on control panel is lit, can the door be opened. Never open the door forcibly while the machine is running, otherwise you can damage the door lock. If you must open the door while the machine is running, first, turn off the power, or pause the cycle, then wait for at least 2 minutes for the door lock to be released.

To open the door, hold the door handle, press the inside handle and pull the door. Close the door by pressing it without excessive force until it clicks shut.

CHILD SAFETY (IF AVAILABLE)

To protect the appliance against improper use, turn the plastic screw on the interior of the door. To do this, use a coin or similar objects.

- Slot vertical: the door will not lock.
- Slot horizontal - normal position: the door can be locked again.



BEFORE THE FIRST WASH CYCLE

To remove any residual water used during testing by the manufacturer, we recommend that you carry out a short wash cycle without laundry.

- 1 Open the tap.
- 2 Close the door.
- 3 Pour a little detergent (about 30 ml) into the main wash chamber (III) of the detergent dispenser .
- 4 Select and start a short programme (see separate quick reference guide).

PREPARATION OF THE WASHING

1. Sort the laundry according to...

• Type of fabric / care label symbol

Cottons, mixed fibres, easy care/synthetics, wool, handwash items.

The wool wash cycle of this machine has been tested and approved by The Woolmark Company for the washing of Woolmark garments labelled as “machine wash” provided that the garments are washed according to the instructions on the garment label and those issued by the manufacturer of this washing machine.

• Colour

Separate coloured and white items. Wash new coloured articles separately.

• Loading

Wash items of different sizes in the same load to improve washing efficiency and distribution in the drum.

• Delicates

Wash small items (e.g. nylon stockings, belts etc.) and items with hooks (e.g. bras) in a cloth bag or pillow case with zip. Always remove curtain rings or wash curtains with the rings inside a cotton bag.

2. Empty all pockets


Coins, safety pins etc. can damage your laundry as well as the appliance drum and tub.

3. Fasteners

Close zips and fasten buttons or hooks; loose belts or ribbons should be tied together.

Stain removal

Blood, milk, eggs etc. are generally removed by the automatic enzyme phase of the programme.

- To remove red wine, coffee, tea, grass and fruit stains etc. add a stain remover to the main wash chamber  of the detergent dispenser.
- Pre-treat heavily-soiled areas with stain remover if necessary.

Dyeing

- Only use dyes that are suitable for washing machines.
- Follow the Manufacturer's instructions.
- Plastic and rubber parts of the washing machine can be stained by dyes.

Loading the laundry

- 1 Open the door.
- 2 Load the articles one at a time loosely into the drum, without overfilling. Observe the load sizes given in the quick reference guide.
Note: Overloading the machine will result in unsatisfactory washing results and creased laundry.
- 3 Close the door .

DETERGENTS AND ADDITIVES

Always use high efficiency, low foam detergent for a front load machine.

The choice of detergent depends on:

- type of fabric (cottons, easy care/synthetics, delicate items, wool).
Note: Use only specific detergents for washing wool
- colour
- the wash temperature
- degree and type of soiling

Remarks:

Any whitish residues on dark fabrics are caused by insoluble compounds used in modern phosphate-free powder detergents. If this occurs, shake or brush out the fabric or use liquid detergents. Use only detergents and additives specifically produced for domestic washing machines. When using descaling agents, dyes or bleaches for the pre-wash, make sure that they are suitable for use in domestic washing machines. Descalers could contain products which could damage your washing machine. Do not use any solvents (e.g. turpentine, benzine). Do not wash fabrics that have been treated with solvents or flammable liquids.

Dosage

Follow the dosage recommendations on the detergent pack. They depend on:

- degree and type of soiling
- size of wash
follow the detergent manufacturer's instructions for a full load;
half load: 3/4 the amount used for a full load;
minimum load (about 1 kg): 1/2 the amount used for a full load;
- water hardness in your area (ask for information from your water company).
Soft water requires less detergent than hard water.

Notes:

Too much detergent can result in excess foam formation, which reduces washing efficiency. If the washing machine detects too much foam, it may prevent spinning. Insufficient detergent may result in grey laundry in time and also calcifies the heating system, drum and hoses.

Where to put detergent and additives

The detergent drawer has three chambers (fig. "A")

Prewash chamber

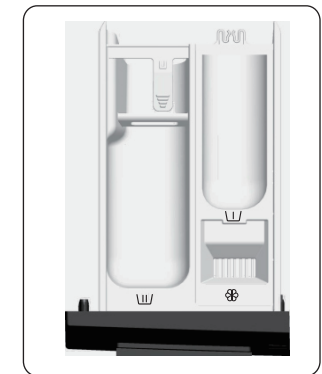
- Detergent for the prewash / soak

Mainwash chamber

- Detergent for the main wash
- Stain remover
- Water softener (water hardness class 4)

Softener chamber



- Fabric softener
- Liquid starch
Pour additives only up to the "MAX" mark.



A

Notes:

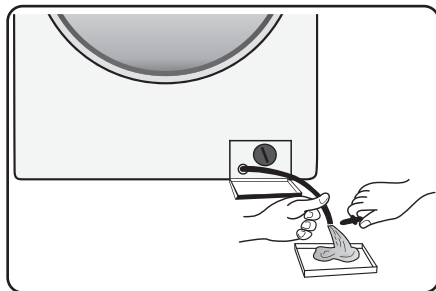
- Keep detergents and additives in a safe, dry place out of the reach of children.
- Liquid detergents can be used for programmes with prewash. However, in this case a powder detergent must be used for the main wash.
- Do not use liquid detergents when activating the "Start Delay" function (if available on your washing machine).

- To prevent dispensing problems when using highly concentrated powder and liquid detergents, use the special detergent ball or bag supplied with the detergent and place it directly inside the drum.
- When using descaling agents, bleaches or dyes, make sure that they are suitable for washing machines. Descalers could contain compounds that can damage parts of your washing machine.
- Do not use any solvents in the washing machine (e.g. turpentine, benzene).
- If you use starch powder proceed as follows:
 - 1 Wash your laundry using the desired wash programme.
 - 2 Prepare the starch solution according to the starch manufacturer's instructions.
 - 3 Select the "Rinse+Spin" programme, reduce the speed to 1000rpm and start the programme.
 - 4 Pull out the detergent drawer until you can see about 3 cm of the main wash chamber 
 - 5 Pour the starch solution into the main wash chamber  while the water is running into the detergent drawer.
 - 6 If there are starch residues in the detergent drawer when the programme has finished, clean the main wash chamber.

DRAINING RESIDUAL WATER (depends on model)

Before emptying the residual water, switch the appliance off and unplug it from the mains socket. Remove the plinth, place a container beneath it.

- 1 Pull out emergency drain pipe of machine.
- 2 Put end of emergency drain pipe into a container.
- 3 Rotate emergency drain pipe plug and remove it after it becomes loose.
- 4 Until water runs off naturally.
- 5 Reinstall emergency drain pipe plug.
- 6 Fill detergent box with 1L water to check emergency drain pipe. Check if there is any leakage at connection of pipe plug.
- 7 Put emergency drain pipe back.



CARE AND MAINTENANCE

Appliance exterior and control panel

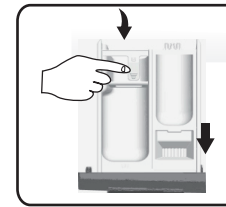
- Can be washed down with a soft, damp cloth.
- A little neutral detergent (non abrasive) can also be used.
- Dry with a soft cloth.

Door seal

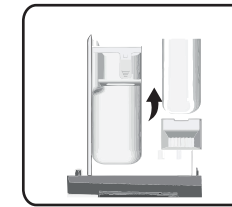
- Clean with a damp cloth when necessary.
- Check the condition of the door seal periodically.

Detergent dispenser

- 1 Press the release lever in the main wash compartment downward and remove the drawer (fig. "B").
- 2 Remove siphon in softener slot. (fig. "C").
- 3 Wash all the parts under running water.
- 4 Refit the siphon in the detergent drawer and fit the drawer back inside its housing.



B



C

Filter

We recommend that you check and clean the filter regularly, at least two or three times a year.

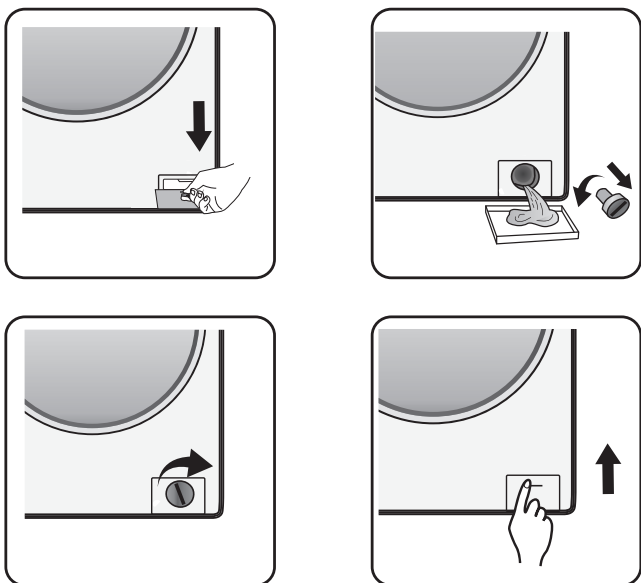
Especially:

- If the appliance is not draining properly or if it fails to perform spin cycles.
- If the pump is blocked by a foreign body (e.g. buttons, coins or safety pins).

IMPORTANT: Ensure that the water has cooled before draining the appliance.

- 1 Stop the appliance and unplug it.
- 2 Insert removal tool like slotted screwdriver into the small opening of bottom baffle, press the bottom baffle downward with much strength and open it.

- 3 Put a flat container under filter door and then drain with emergency drain pipe (see [draining residual water] for specific operation methods). Then, loosen filter anticlockwise and completely unscrew and remove the filter.
- 4 Clean the filter and the filter chamber.
- 5 Check that the pump rotor moves freely.
- 6 Re-insert the filter and screw it in clockwise as far as it will go.
- 7 Reinstall the plinth.



Water supply hose

Check the supply hose regularly for brittleness and cracks and replace it if necessary using a new hose of the same type (available from After-Sales Service or specialist dealer).

Mesh filter for water connection

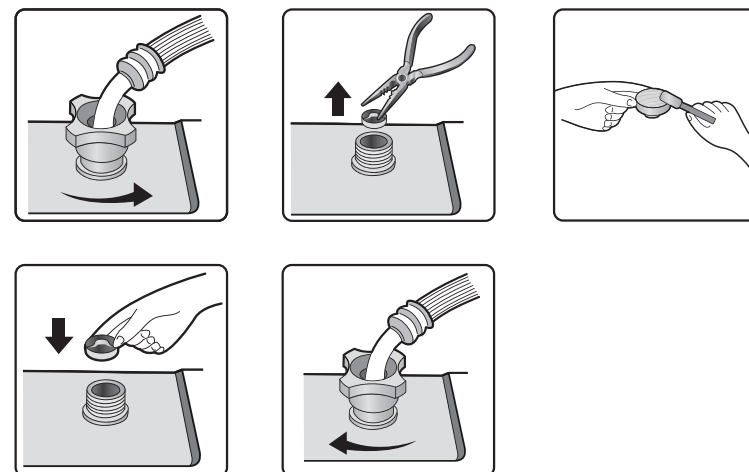
Check and clean regularly.

For washing machines with an inlet hose as shown on pictures "D",

- 1 Close the tap and loosen the inlet hose on the tap.
- 2 Clean the internal mesh filter and screw the water inlet hose back onto the tap.
- 3 Now unscrew the inlet hose on the rear of the washing machine.
- 4 Pull off the mesh filter from the washing machine connection with universal pliers and clean it.
- 5 Refit the mesh filter and screw the inlet hose on again.
- 6 Turn on the tap and ensure that the connections are completely water-tight.



D



TROUBLESHOOTING GUIDE

Depending on the model, your washing machine is equipped with various automatic safety functions. This enables faults to be detected in good time and the safety system can then react appropriately. These faults are frequently so minor that they can be resolved within a few minutes.

The washing machine will not start, no indicator lamps are on.

Check whether:

- the mains plug is inserted into the socket and the power switched 'ON' .
- the wall socket is functioning correctly (use a table lamp or similar appliance to test it).

The washing machine will not start... and the "Start/Pause" indicator lamp flashes.

Check whether:

- the door is properly closed (child safety);
- the "Start/Pause" button has been pressed;
- the "Water tap closed" indication lights up. Open the water tap and press the "Start/Pause" button.

The appliance stops during the programme (varies depending on model)

Check whether:

- the "Rinse Hold" indicator lamp lights up; terminate this option by pressing the "Start/Pause" button or by choosing and starting the "Drain" programme;
- another programme has been selected and the "Start/Pause" indicator lamp is flashing. Reselect the desired programme and press the "Start/Pause" button.
- the door has been opened and the "Start/Pause" indicator lamp is flashing. Close the door and press the "Start/Pause" button again.
- Check if there is too much foam inside, machine enters kill-foam routine. The machine will run again automatically after a period.
- the washing machine's safety system has been activated (see "Fault description table").

Residue from detergent and additives left in the detergent drawer at end of wash.

Check whether:

- the cover grid of the softener chamber and the separator of the main wash chamber are correctly installed in the detergent dispenser and all parts are

clean (see "Care And Maintenance");

- sufficient water is entering. The mesh filters of the water supply could be blocked (see "Care and Maintenance");
- the position of the separator in the main wash chamber is adapted to the use of powder or liquid detergent (see "Detergent and Additives").

Machine vibrates during spin cycle.

Check whether:

- the washing machine is level and standing firmly on all four feet;
- the transport bolts have been removed. Before using the machine, it is imperative that the transport bolts are removed.

Final spin results are poor.

The washing machine has an imbalance detection and correction system. If individual heavy items are loaded (e.g. bathrobes), this system may reduce the spin speed automatically or even interrupt the spin completely if it detects too great an imbalance even after several spin starts, in order to protect the washing machine.

- If the laundry is still too wet at the end of the cycle, remove some articles of laundry and repeat the spin cycle.
- Excessive foam formation may prevent spinning. Use the correct amount of detergent.
- Check that the spin speed selector has not been set to "0".

If your washing machine has a time display: the programme time initially displayed is lengthened / shortened by a period of time:

This is a normal capacity of the washing machine to adapt to factors that can have an effect on the wash programme time, e.g.:

- excess foam formation;
- load imbalance due to heavy items of laundry;
- prolonged heating time due to reduced inlet water temperature;

Because of influences like these, the time remaining in the programme run is recalculated, and updated if necessary. In addition, during the filling phase, the washing machine determines the load and if necessary adjusts the initial programme time displayed accordingly. During such update periods, an animation appears on the time display.

Hot / Cold fill fault - For Models with Dual Inlets

If you wish to connect hot and cold water supply (Fig.1):

- 1 Fix the red marked inlet hose to the hot water tap and to the inlet valve with the red filter on the rear side of machine.
- 2 Fix the other inlet hose to the cold water tap and to the inlet valve with the blue filter on the rear side of the machine.

Make sure:

- a) The connections are tightly fixed
- b) Do not invert their position (for example: cold fill into hot inlet valve and vice versa).

If you wish to connect only the cold fill follow the below instructions (Fig. 2):

- 1 You will need a Y-piece connector. This can be purchased from local hardware or plumbing supplier.
- 2 Fix the Y-piece connector to the cold fill tap.
- 3 Connect the two inlet valves present on the rear part of the machine to the Y-piece connector using the hoses provided.

Ensure that:

All connections are tightly fixed.

Do not allow children to operate, crawl on, be near or inside your washer.

Note that during the wash cycles, the surface temperature of the porthole door may increase.

Close supervision of children is necessary when the appliance is used near children.

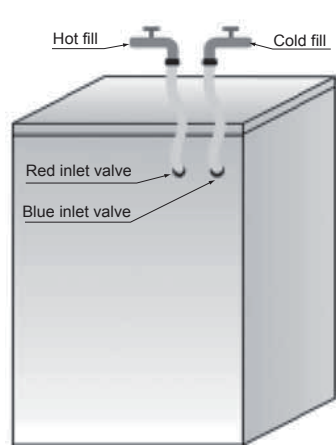


Fig.1

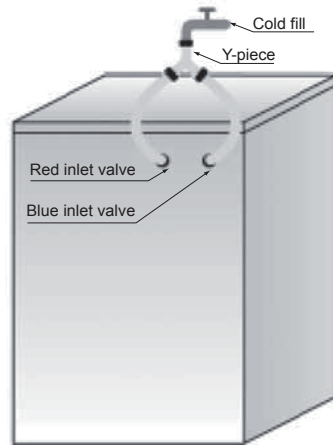


Fig.2

Fault Code List	
Displayed on Display Window	Fault Description
"F01"	Water inflow fault
"F03"	Drainage fault
"F04", "F05", "F06", "F07", "F23" and "F24"	Electronic module fault, overflow or too much foam.
"F13"	Door lock fault
"UNB"	Unbalance alarm

a. "F01" displayed on screen

The machine is not fed with water or insufficient water. Check:

- Faucet is fully open and has enough water pressure.
- Water inlet pipe is knotted or not.
- Filtering net of water inlet pipe is blocked or not (refer to maintenance and repair).
- Water pipe is frozen or not.

Press "Start/Pause" key after fault is removed.

If fault occurs again, please contact with after-sale service (refer to after-sale service.).

b. "F03" displayed on screen

The washer is not emptied. The washer stops the program being executed. Shut down the machine and disconnect power supply. Check:

- Drain pipe is knotted or not.
- Filter in drain pump is blocked or not (refer to the cleaning of filter in drain pump)

IMPORTANT: Ensure that the water has cooled before draining the appliance.

- the drain hose is frozen up.

Plug in the appliance again.

Select and start the "Drain" programme or push the "Reset" button for at least 3 seconds and restart the desired programme.

If the fault occurs again, please contact After-Sales Service (see "After-Sales Service").

C. Fault code

The washer stops when the program is running. The display window shows fault code “F24”, fault codes from “F04” to “F07”, “F13”, “F23” or “UNB”.

If fault code “F24” is shown

Water level reaches overflow level.

Remove it by pressing “Start/Pause” key and feed water.

Select and start required program. If fault occurs again, disconnect power supply and contact with after-sale service.

If fault code “F04” to “F07”, “F23” shown

Electronic module fails.

Press “Power Supply” key for 3 sec to turn off the machine.

After fault is removed, press “Start/Pause” key. If fault occurs again, disconnect power supply and contact with after-sale service.

If fault code “F13” is shown

Door lock is abnormal. Start program for 20 sec and unlock the washer door (PTC) to check whether the door is closed.

Open or close it again.

After fault is removed, press “Start/Pause” key. If fault occurs again, disconnect power supply and contact with after-sale service.

If fault code “UNB” is shown

Unbalance alarm.

Press “Power Supply” key for 3 sec to turn off the machine. Open the door and re-tidy clothes and then rotate program knob to single dehydration mode. Spin clothes to dry again.

If fault occurs again, disconnect power supply and contact with after-sale service.

AFTER-SALES SERVICE

Before contacting After-Sales Service:

- 1 Try to remedy the problem yourself (see “Troubleshooting Guide”).
- 2 Restart the programme to check whether the problem has solved itself.
- 3 If the washing machine continues to function incorrectly, call After-Sales Service.

TRANSPORT/HANDING

Never lift the appliance by the worktop when transporting.

- 1 Pull out the mains plug.
- 2 Turn off the tap.
- 3 Disconnect the inlet and drain hoses.
- 4 Eliminate all water from the hoses and from the appliance (see “Removing the Filter”, “Draining Residual Water”).
- 5 Fit the transport bolts (obligatory).
- 6 The machine is over 55 Kg in weight, two persons are needed to move it.

ELECTRICAL CONNECTION

Only use a socket with an earth connection.

- Do not use extension leads or multi sockets.
- Electric supply must be adequate for the machine’s 10 A Current Rating.
- Electrical connections must be made in accordance with local regulations.
- The electrical power cable must be replaced exclusively by a licensed electrician.